



1.) Alamance Arts has operated in the Captain White House since 1998. It was named for Captain James White, who brought cotton to the mills here run by E.M. Holt then he married Holt's youngest daughter Emma. The house was built in 1873 and remained in the family for over 100 years.



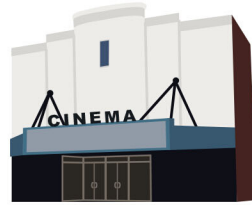
2.) The City of Graham gets its name from Gov. William Graham of Hillsborough. Incorporation came in 1851, but the city streets were not named until 41 years later.



3.) Mary Elizabeth Holt and her husband Captain James Nathaniel Williamson lived in this house built in 1878. Nationsbank purchased the property in 1993 and renovated it to function as a bank.



4.) The first court session in Alamance County was held at Providence Christian Church in June of 1849. Then the county built its first courthouse in 1851 at a cost of \$8,000. That structure burned in 1923 and was rebuilt to what it looks like today.



5.) The Graham Theatre was opened in 1928 with 250 seats. It suffered a fire in 1935 and was rebuilt as a larger 777-seat movie theatre. The Graham Cinema is a huge vintage movie house, complete with balcony—one of the last old-style theaters in North Carolina that hasn't been chopped into smaller theaters.



6.) The Sesquicentennial Park was created to celebrate Alamance County's 150th birthday back in 1999. The Graham Soda Shop was originally in this site. The 400-pound bell from the original courthouse is located in the park.



7.) The current home of the Graham Historical Museum has housed several town departments since it was constructed back in 1911 as a "Fireman's Building" at a cost of \$2,000. A small jail was built in the back of the building, as well as bay doors for the fire equipment.



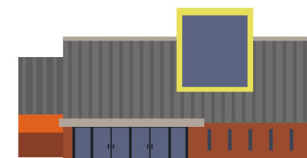
8.) The volunteer firemen in Graham Hose Company No. 1 answered the fire bell beginning in 1903. Despite difficult economic times in the 1930's, Graham purchased a new Seagrave Suburbanite Pumper. The current Graham Fire Station was built in 1967.



9.) The Graham Police Department dates back to the days of constables in 1851 when the city was founded. When he joined the police force in 1947, Ralph Sykes brought the force up to four officers. The current Police Station was completed in 1992.

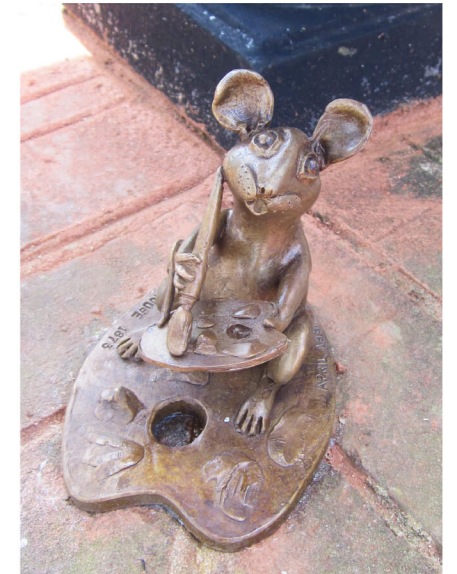


10.) A wing of the Graham Municipal Building was the first home of the Graham Public Library. The new library opened in 1995, and there are currently over 55,000 titles for everyone to enjoy.

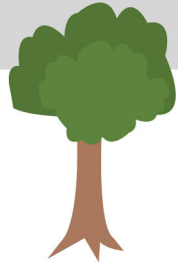


11.) The Children's Museum of Alamance County opened in 2012, and it targets children ages birth through 10. There are fun and interactive exhibits and space for workshops, camps, after-school activities and birthday parties.

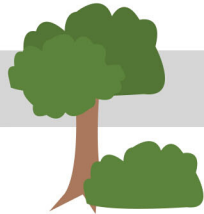
# Let's Find ARTY THE MOUSE!



**Funded by**  
**Phoebe and Pat Harman**



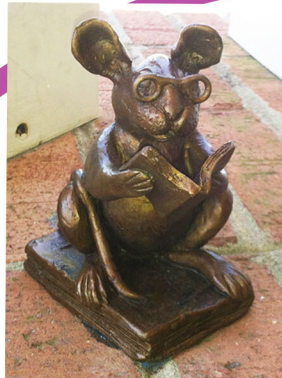
1.) Start your Journey at the Big Yellow House which is the home of Arty the Mouse with his paintbrush.



2.) This red brick building is where the business of the city is conducted and Arty is steering the wheel.



11.) This is a fun place where young and old like to play.



10.) Here you will find lots and lots of books, like the one Arty is holding.



8.) Big red trucks for fighting fires are housed here, and Arty stands ready with a hose and pump.



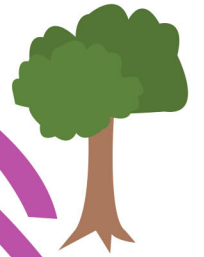
9.) Holding a stop sign is Arty in front of the place where men and women keep us safe.

McClure St

Maple St



7.) Arty is saluting the flag at this building which recognizes history.



6.) This beautiful garden celebrates the county's 150th birthday, and Arty and a friend are making music.



4.) Sitting in the center of Graham is the place where justice is determined, and you'll find Arty blindfolded on the north side.



5.) Look high to find Arty in this place where you watch movies and eat popcorn!



Main St

3.) Another historic house on our hunt now deals in money- Arty has a bagful.



Pine St

