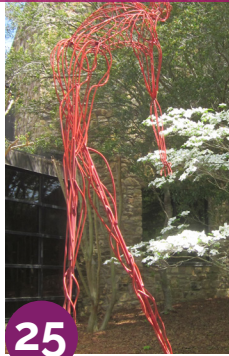
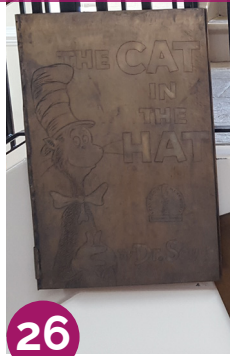


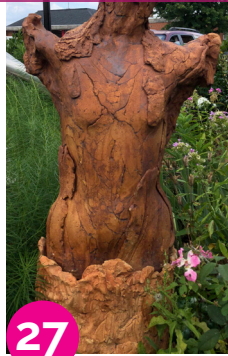
Touching the Sky
Frank Holder
Graham



Bronze Books
Jim Galluci
Mebane



Emerging
Tinka Jordan
Graham



Blue Collar
Mike Richardson
Mebane



Matt Amante

Matt Amante has been a professional artist for the past 10 years. Amante has a studio in Winterville, NC and has art and sculptures all over North Carolina, including Salisbury, Clayton, and on East Carolina University's campus in Greenville.

Mike Roig

Mike Roig lives and works in Carrboro, where he maintains the Heartworks Studio. Roig is a graduate from the University of Maryland where he earned Bachelor of Arts in Studio Art with concentrations in drawing, sculpture and printmaking.

Casey Lewis

Casey Lewis and his wife, Emily Lewis established Beechwood Metalworks Inc. in 2002. The company is located in Burlington, NC and specializes in metal art and metal sculpture. Beechwood sculptures are featured at museums, parks and other public places throughout the United States and in other countries.

Ready to go? Scan me for the tour route!

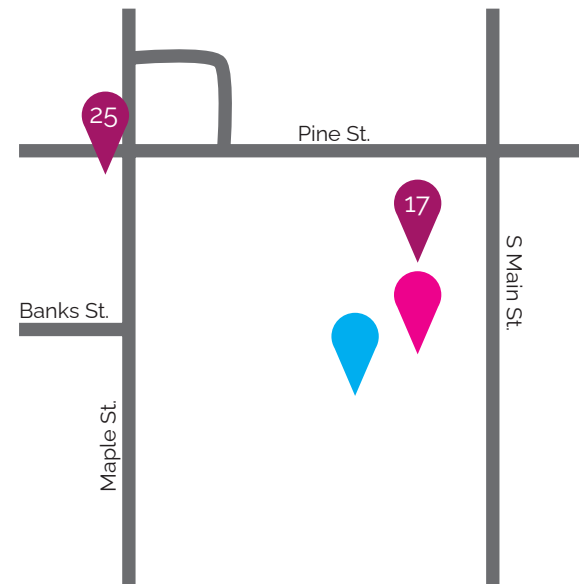
Out of this Whirled
Mike Roig
Mebane



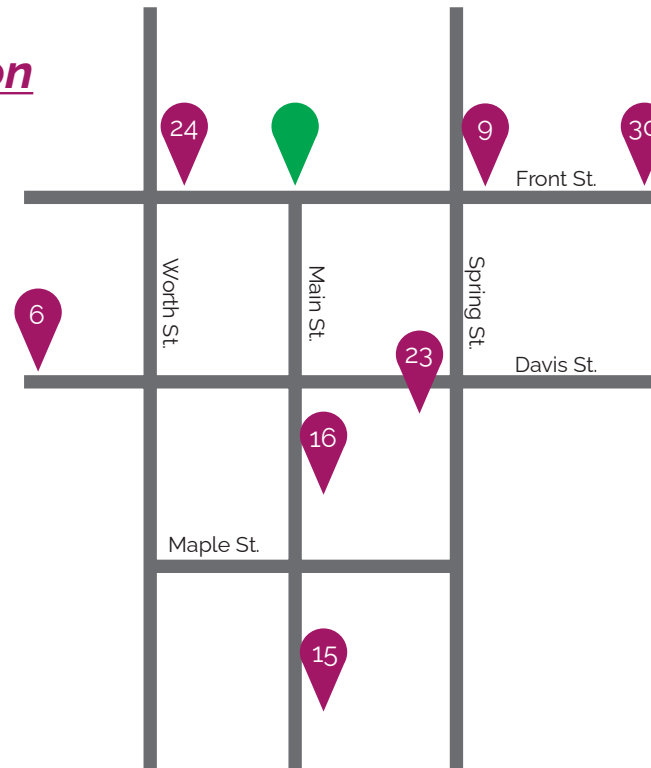
Saving Seed 1
Frank Holder
Burlington



Graham



Burlington



Mebane



ALAMANCE ARTS

PUBLIC ART GUIDE 2021

Thank You!

Alamance Arts would like to thank those who contributed to implementing our public art pieces. We have the utmost gratitude for New Leaf Society, LabCorp, Ricky and Lummy Barnes, Carolina Biological, Burlington Downtown Corporation, City of Burlington, City of Mebane, Frank Holder and Wayne Vaughn. Without you, we would not be able to enrich our community.

A Subtle Miracle
Gretchen Lothrop
Mebane*



1

Gerbera Display
Casey Lewis
Burlington**



2

Dimpled
Scott Harris
Burlington



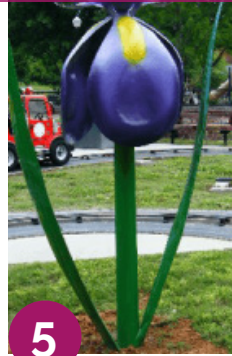
3

Chasing the Wind
Jeff Hackney
Burlington***



4

Iris
Casey Lewis
Burlington**



5

Ode I-Beam
Mike Roig
Burlington



6

Opposing Arcs 4
Matt Amante
Burlington



7

Hummingbird
Casey Lewis
Graham



8

SC Death Star Palm
Mike Richardson
Burlington



9

Daffodil
Casey Lewis
Burlington**



10

Freedom
Wayne Vaughn
Graham



11

Dancing in the Air
Frank Holder
Graham



12

Jim Galluci

Jim Galluci earned a MFA in 1976 from Syracuse University. Gallucci designs and fabricates sculptures in his Greensboro studio assisted by a staff of six. Most of his works are commissions for public, corporate, and residential spaces around the country.

Jeff Hackney

Jeff Hackney is a distinguished artist based in Hillsborough, NC and his work can be seen in numerous collections around the region. Throughout his career, Hackney has always been drawn to the sculptural element and defining simplicity in design and construction.

Scott Harris

Scott Harris is an aluminum artist and sculptor whose pieces are placed all over the southeast. He completed a BA in Visual Arts from Brevard College and has completed many personal and corporate sculptures.

Jonathan Bowling

Jonathan Bowling attended the University of Kentucky where he earned degrees in sculpture and art history. In 1996, Bowling pursued a MFA in sculpture at East Carolina University. Bowling has a studio in Greenville.

Timothy Werrell

Timothy Werrell has been a professional sculptor since 1979 and is now located in Durham, NC. Werrell has created large scale public and private sculptures for clients across the country, including a Charles Taft Memorial, a Vietnam Memorial and numerous pieces for public libraries.

Gretchen Lothrop

Gretchen Lothrop's works represent her fascination with history and are inspired by the notion that visual relationships equal a kind of musical harmony. Lothrop says she thinks of her work as "a metaphor for music and dance."

Frank Holder

Frank Holder creates dynamic metal sculptures influenced by his background in botany, dance, theater, and visual arts. Working with various metals, Holder brings his forms to life by invoking his personal history of dance and choreography.

Mike Richardson

Mike Richardson has spent the last 30 years as a metal worker and has spent the last eight years at Beechwood Metalworks in Burlington. His work can be seen in hospitals, children museums and private collections across the world.

Wayne Vaughn

Wayne Vaughn first became involved with metal art in 2004 after a long career in home construction. Wayne's work can be seen at various statewide shows where he and his wife, Shirley, share their creative spirit.

Charles Pilkey

Charles Pilkey holds a BFA in Sculpture from East Carolina University and a MFA in Sculpture from the University of Missouri. He has participated in more than 120 group and private exhibitions in the US, Canada, China, Japan, Korea, Turkey, France and Italy and he is the recipient of many awards and prizes for his work.

Jordan Parah

Jordan Parah is a graduate of East Carolina University with a bachelor in Fine Arts in Sculpture and a minor in Art History. She has since then started her own studio called the Dirty Lamb where she makes outdoor aluminum sculptures. In addition to her work, Jordan is currently working at the Greenville Museum of Art.

*Not pictured on map, located 633 Corregidor St.

**Not pictured on map, located in Burlington City Park

***Not pictured on map, located at Alamance Crossing

Balancing in the Air
Frank Holder
Graham



13

Opposing Arcs 3
Matt Amante
Burlington



14

Let's Build it Together
Michael Waller
Burlington



15

Strangely Familiar
Jeff Hackney
Burlington



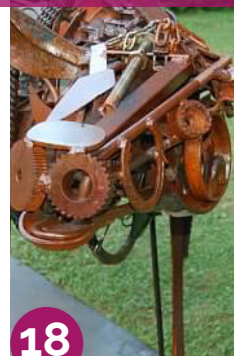
16

Moby
Mike Roig
Graham



17

Cow
Jonathan Bowling
Burlington



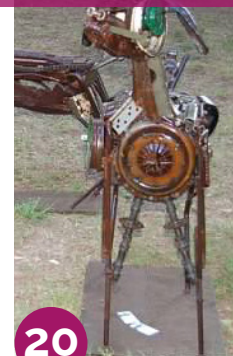
18

Tecton
Don Green
Mebane



19

Goats
Jonathan Bowling
Glen Raven



20

Tulip
Casey Lewis
Burlington**



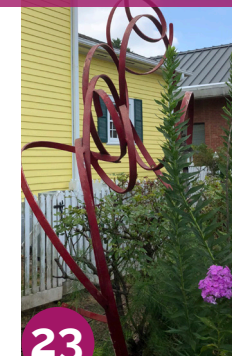
21

Opposing Arcs 2
Matt Amante
Burlington



22

Dancing Form Red
Frank Holder
Burlington



23

Birds in Flight
Timothy Worrell
Burlington



24